

Voice

of the villages

Hunningham, Offchurch, Weston, Wappenbury, Eathorpe

Newsletter

SEPTEMBER 2023



Mid-September used to be the time for blackberry picking. But there have been lots of ripe blackberries

in our hedges since mid-August this year. The seasons are definitely changing!

Editor: David Wray (wraydj@gmail.com)

The VOICE website
www.villagevoice.org.uk



Practically Perfect Ceremonies

Create your own unique ceremony

Lesley Coles - Independent Celebrant
Weddings, Vow Renewals, Namings & Funerals



Tel. 07967 203181

Email. lesley@practicallyperfectceremonies.co.uk

Web. www.practicallyperfectceremonies.co.uk

OFFCHURCH VILLAGE BARBECUE

How fortunate we were with the weather for the annual barbecue on village field! Not quite as many folk as in some years, but fun all the same. We had a lovely relaxed afternoon chatting to friends and neighbours, and took advantage of some welcome sunshine.

We were provided with some attractive raffle prizes by local businesses, including the Stag, Red Lion, White Lion and Hilltop Farm, which raised £80 for Warwick Foodbank. We are grateful to them and to those present for their generosity.

Thanks also to Blackdown Growers who kindly provided us with some wonderful fresh salad.

Offchurch Events Group

WESTON BABIES and TODDLERS WEEKLY GROUP

EVERY FRIDAY MORNING at 9.45am

(Restarts September 8th)

VENUE: Weston Village Hall

Come and let the little ones have lots of fun and meet other Mums, Dads, Grandparents, and Carers.



Further information contact Hazel Taylor 01926 632428

THE PILGRIM PUPPETS

FORTHCOMING EVENTS:

Sunday 3rd September Come 2 Worship in

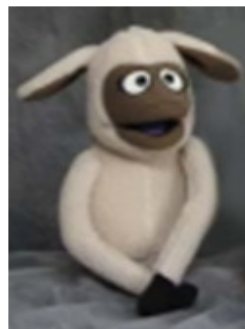
HUNNINGHAM CHURCH 11.00am

Thursday 28th September GAINSBOROUGH

HALL Care Home Warwick 2.30pm

Sunday 1st October Harvest service at

HUNNINGHAM CHURCH 11.00am



Ring Hazel Taylor 01926 632428 if you are interested in our Puppets being part of your events.

For information about the Pilgrim Puppets, please have a look at [their web page](https://www.villagevoice.org.uk/?page_id=1069) at: https://www.villagevoice.org.uk/?page_id=1069

MESSY CHURCH

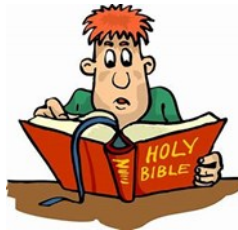


7 October 2023

at

Weston under Wetherley Village Hall, Sabin Drive

3pm -5pm



Games, songs, stories and fun

To find out more email

messyoffchurch@gmail.com

**Reserve the date now for our Christingle Messy on
16 December**

VILLAGE NEWS

The Community Café 'Drop In' is now seasonal.

Everyone welcome for refreshments & a chat at the café.

During the Winter months ...

On the last Wednesday of **September, October, November, January, February**



We will be serving a soup lunch 11.45am
for 12noon
In **Offchurch Village Hall**

On the second Wednesday of every summer month

We will serve Afternoon Tea in
Hunningham Parish Room
(St Margaret's) from 3.30pm
April, May, June, July



We will keep in touch with regular attendees but for
up-to-date information ring Hazel on 01926 632428

... getting people together for food and fellowship



We genuinely love helping people and we love technology!

So we combine the two into an honest, independent, personal IT service that can help you get technology to work for you rather than against you.

Call Gary on 07814 236595 or visit our website
www.coolbreezetechnologyservices.co.uk



The Eathorpe Art and Craft Fair

Sunday, October 15th

11.00 am to 3.00 pm

Eathorpe Village Hall

**Come along, browse and buy from a range of
Arts and Craft stalls**

⇒ ***From hand-made pens
to products
from the
beehive***



⇒ ***From hand-made furniture
to antique crockery***

**Refreshments available — tea, coffee, home-
made cakes etc.**

ENTRY FREE



The Offchurch Group Harvest Supper 2023

Saturday 16 September at 7pm
Offchurch Village Hall

A traditional harvest supper of home-made
raised pies, salads and jacket potatoes with
a variety of desserts



Vegetarian and gluten free options



Tickets £7 for adults. Children under 14 free of charge



Please bring your own drinks



For tickets contact

Liz on 07940 560252 or ldvarnish@gmail.com or

Hazel on 01926 632428 or hazeltaylor43@outlook.com



ANNOUNCING
The NEW Offchurch Flower Club



***Meets at Offchurch Village Hall 7.30-9.30 on the second
Wednesday of the Month.***

Meeting Dates
13th September
11th October
8th November
13th December.

First meeting free. Please bring a pair of 'garden' scissors.

***Setting up the Offchurch Flower Club is a direct result of
the very successful Flower Festival to celebrate the
Coronation of King Charles III in May 2023. Arrangements,
both magnificent and modest were designed by residents
and friends of the village and its environs.***

It was an opportunity to make new friends, to learn about and encourage the love of flowers and plants and to demonstrate their decorative and creative value.



The Offchurch Flower Club will provide opportunities in all facets of flower arranging - through visiting demonstrators, outings, social workshops as group activities as well as to be your own creative self. In the long term the OFC will encourage conservation and sustainability.

Through the OFC it is hoped to support a variety of causes by organising exhibitions and competitions and to motivate and nurture club members to achieve more than they thought possible on a modest budget.

It is hoped to build a healthy and inclusive community by connecting people, to make friends by group activities and to bring inspiration and joy to all.

If you are unable to come to the first meeting but would like to show your interest, please contact Maggie Hartog.



Email mandhartog@gmail.com

POETRY PAGE

When I was 18, I left home to study for my degree at the University of Hull. I chose Hull because one of my school teachers had studied there and because it had strong reputation for Modern Foreign Languages. As often happens, of course, what Hull gave me, apart from a degree, was an abiding interest in the two Ps - politics and poetry. The poetry is easy to explain - at that time the Chief Librarian in the University was Philip Larkin, someone who even a less than worldly-wise youth such as myself had heard of, although I do admit I found his poetry at that time rather miserable in tone. Larkin had established in the Library at Hull a Poetry Room, where anybody could go to browse the extensive collection of poetry books or listen through headphones to poets reading their own work aloud. Every few weeks there was also an evening event which usually consisted of a guest poet reading from his/her work. I felt really privileged to be able to listen to such luminaries as Ted Hughes, John Betjeman and a rather fiery Welsh woman called Gillian Clarke. Her work immediately attracted me as she was a real wordsmith, with what seemed an uncanny ability to weave words into intricate tapestries of emotion, imagery, and introspection. She clearly loved the natural world, and used it to show some profound insights into the human experience. That deep connection with nature and a sensitivity to the nuances of the human condition were what initially got my attention - and still does.



It would be very subjective to suggest a "best" poem by Gillian Clarke, as opinions on poetry can vary widely based on personal preferences and interpretations. However, one of her most acclaimed and widely anthologised poems is "*Cold Knap Lake*." This poem showcases her ability to capture the essence of human

emotions and experiences in a vivid and poignant manner. It explores the tragic incident of a child almost drowning in a lake, blending Clarke's lyrical prowess with her deep understanding of human nature and its connection to the natural world.

Cold Knap Lake

*We once watched a crowd
pull a drowned child from the lake.
Blue-lipped and dressed in water's long green silk
she lay for dead.
Then kneeling on the earth,
a heroine, her red head bowed,
her wartime cotton frock soaked,
my mother gave a stranger's child her breath.
The crowd stood silent,
drawn by the dread of it.
The child breathed, bleating
and rosy in my mother's hands.
My father took her home to a poor house
and watched her thrashed for almost drowning.
Was I there?
Or is that troubled surface something else
shadowy under the dipped fingers of willows
where satiny mud blooms in cloudiness
after the treading, heavy webs of swans
as their wings beat and whistle on the air?
All lost things lie under closing water
in that lake with the poor man's daughter.*

In other poems the incidents which spark her attention are less earth-shattering but nevertheless just as moving. In *Calf*, the focus is on the birth of a calf on her farm. The poem has an intensity typical of the woman who became in 2008 the third National Poet of Wales.

Calf

*On the hottest, stillest day of the summer
A calf was born in a field
At Pant-y-Cetris; two buzzards
Measured the volume of the sky;
The hills brimmed with incoming
Night. In the long grass we could see
The cow, her sides heaving, a focus
Of restlessness in the complete calm,
Her calling at odds with silence.
The light flowed out leaving stars
And clarity. Hot and slippery, the scalding
Baby came, and the cow stood up, her cool
Flanks like white flowers in the dark.
We waited while the calf struggled
To stand, moved as though this
Were the first time. I could feel the soft sucking
Of the new-born, the tugging pleasure
Of bruised reordering, the signal
Of milk's incoming tide, and satisfaction
Fall like a clean sheet around us.*



If you would like to know more about Gillian Clarke and her work, have a [look at her website](#), where there are lots of examples of her poetry, some with audio of her reading them.

For more readings of her poems, go to the [Poetry Archive page](#).

NEIGHBOURHOOD WATCH



Watch out for this WhatsApp scam

Large community and religious WhatsApp groups are being targeted by scammers who infiltrate them to try and deceive their members into sending them money. Since January of this year, 268 people have reported falling victim to this scam.

The fraud often begins when a member of the group receives a WhatsApp audio call from the fraudster, pretending, or claiming, to be a member of the group. This is done in order to gain the individual's trust, and often the scammer will use a false profile picture and / or display name, so at first glance would appear to be a genuine member of the group.

The fraudster will then call the victim and say they are sending a one-time passcode which will allow them to join an upcoming video call for group members. The scammer then asks the victim to share this passcode with them so they can be "registered" for the video call. What's really happening is that the scammer is asking for a registration code to register the victim's WhatsApp account to a new device where they then "port" their WhatsApp profile over.

Once the fraudster has access to the victim's WhatsApp account, they will enable two-step verification which makes it impossible for the victim to access their account. The scammer will then message other members of the group, or friends and family in the victim's contacts, asking them to transfer money urgently as they are in desperate need of help.

Oliver Shaw, Head of Action Fraud said:

“WhatsApp continues to be a popular platform for community and religious groups, but sadly also for fraudsters. Here, the scammers rely on the goodwill of group members and their intrinsic desire to help others in distress.

“We urge people always to be wary when receiving contact via WhatsApp or other messaging platforms. This is particularly the case when being asked to provide account information – despite the fact that you may recognise the individual’s profile picture and / or name.

“Never share your account information with anyone, and if you think it’s a fraudulent approach, report the message and block the sender within WhatsApp. To make your account more secure, we advise setting up two-step verification to provide an extra layer of protection. This makes it increasingly more difficult for fraudsters to gain access to somebody else’s WhatsApp account”.

What can you do to avoid being a victim?

- **Never** share your account’s two-factor authentication (2FA) code (that’s the six digit code you receive via SMS).
- **Set up two-step verification** to give an extra layer of protection to your account. Tap Settings > Account >Two-step verification > Enable.
- **THINK. CALL.** If a family member or friend makes an unusual request on WhatsApp, always call the person to confirm their identity.
- You can **report spam messages or block a sender within WhatsApp**. Press and hold on the message bubble, select ‘Report’ and then follow the instructions.

If you have been a victim of fraud or cybercrime, report it at www.actionfraud.police.uk or by calling 0300 123 2040.

(If you have found this information useful, please forward to a friend, family member or colleague).



Working Together as a Community

Joint Parish Council Meetings

The Parish Council website can be found at
www.ehow-jpc.org.uk

Our next meeting is scheduled for 19th September 2023 at 7:30pm and is being held at Eathorpe Village Hall.

Members of the public are welcome to attend meetings.

Residents can still email or phone Parish Councillors if they have issues to raise.

For further information or an emailed copy of the meeting Agenda or minutes please contact the Clerk on Clerk.jpcehow@outlook.com

The meeting dates for 2023

The dates below follow the usual JPC pattern of meetings.

September	19 th	Eathorpe Village Hall
October	No Meeting	
November	21 st	Eathorpe Village Hall
December	No Meeting	

Warwickshire Mobile Library



Eathorpe Village Hall

12.00 - 12.20

Offchurch Village Street

9.15 - 9.30

The mobile
library will be
available on:

15th September



CONTACT THE TEAM

01926 851031

mobilelibraryservice@warwickshire.gov.uk

www.warwickshire.gov.uk/mobilelibraries

CHURCH SERVICES

SEPTEMBER 2023



Sunday 3rd	11.00am – Come2Worship + Zoom	St Margaret's
Sunday 10th	10.00am – Holy Communion + Zoom	St Gregory's
Sunday 10th	6.00pm - Evensong	St Michael's
Sunday 17th	10.00am - Service of the Word + Zoom	St Gregory's
Sunday 24th	10.00am – Holy Communion + Zoom	St Gregory's

Rheams (Plumbing & Heating) Limited

Est. 1967

Gas Safe Registered Engineers

Full central heating and boiler installations

Powerflush service

Landlords checks

**Servicing of heating appliances - natural gas,
LPG and Commercial**

Bathroom installations and general plumbing

**24 hour emergency call out, 365 days a year
(additional charges apply)**

Free quotations for large scale works

No job too small !

www.rheams.co.uk enquiries@rheams.co.uk

4 Manor Farm House, Lime Avenue, Lillington

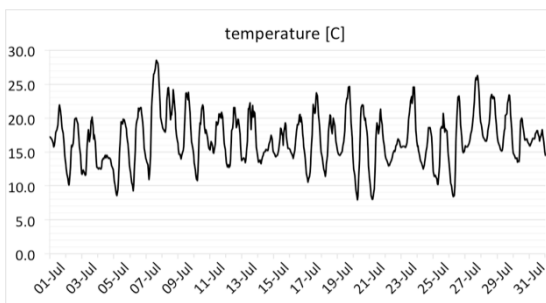
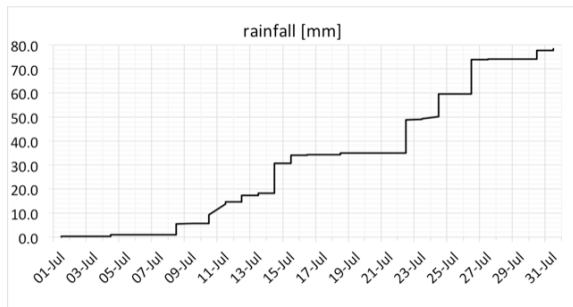
Tel. 01926 428752

WEATHER WATCH: JULY 2023

The Met Office has stated that this July was the wettest since records began some 130 years ago.

Certainly, in parts of the UK this was the case but not in our area. With the month's rainfall at 78.4 mm it was 37% above

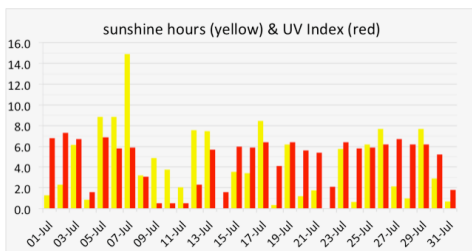
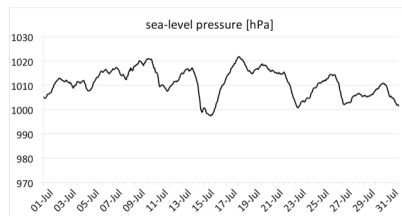
average. However this was only the third highest in the past 26 years for the wettest July was in 2007 when 142 mm of rain was recorded.



Generally, it was a cool month; the average temperature of 17.2°C was 0.7°C below average and 2.8°C below last year's July average, which was a particularly hot month!

The hottest day here was 7th when I recorded 27.9°C.

The sea-level atmospheric pressure was lower than previous months, averaging 1011 hPa, with a maximum of 1019 hPa and a minimum of 999 hPa.



Westerly winds brought cloudy days, with only one cloudless day in the whole month on 7 July when we had 14.9 hours of sunshine. Otherwise, the average was 4.8 hours per day

which gave just 64% of the average sunshine for our area. That said, there were only two days with no sun at all. Ultraviolet (UV) Index maxima are falling as the sun begins to retreat from its highest elevation of mid-June (61° at our latitude), being 7.3 at the beginning of the month and 6.7 at the end. The reason for this fall is that as the sun's maximum elevation decreases its radiation has to pass through a greater depth of atmosphere, which lowers the maximum possible radiation reaching the ground.

Once in a Super Blue Moon

This year August sees what is said to be an unusual event, namely a *blue moon*. Of course the moon doesn't turn blue, but what causes this event and why is it called *blue*? The moon takes approximately one month to complete its cycle around the earth, so we would expect 12 full moons in each year. However, it only takes the moon 29.5 days to complete its cycle meaning 12 full moons take only 354 days, which is somewhat short of the 365/366 days to complete our calendar year. Thus, around every 2½ years a 13th full moon occurs, and such an event is happening this year. In many cultures names are given to each of the 12 full moons in the year. For example we may refer to a full moon in September as a *harvest moon* followed by a *hunters moon* in October. When a 13th full moon occurs it is the *blue moon*. The name is thought to derive from the now disused word "belewe", which meant 'to betray', as the appearance of the 13th moon caused consternation amongst Moon worshippers, who set the date and period of Lent from the full moon. This begs the question, which full moon is the *blue* one? The answer is that it's the third full moon in the astronomical season which contains four full moons. Astronomical seasons are defined by the equinoxes and solstices, eg the winter season from the winter solstice (21 December) to the spring equinox (21 March), the spring season from then to the summer solstice

(21 June), etc. This year four full moons appear in the summer season and it is always the third one that is called *blue*. There is a common belief that a *blue moon* is the second full moon when two appear the same month, but this is not the case even though it happens this August. So, if it's not too cloudy on 31 August go outside and look up towards the south east after the moon rises at around 8.40pm (BST). You should see a *blue moon* – and what's more because the moon is at its closest to the Earth at this time it is actually a *super blue moon* -- and that only happens once in a blue moon!

Reference: The Royal Museums, Greenwich.

For local weather details and forecasts go to: <https://offweather.hopto.org>

Richard Seaton
rkseaton@outlook.com



ST GREGORY'S CHURCHYARD: A SANCTUARY FOR WILDLIFE

*If dry be the buck's horn
On Holyrood morn,
Tis worth a kist of gold;
But if wet it be seen
Ere Holyrood e'en,
Bad harvest is fortold.*

This Yorkshire adage is pleasant to read but gives a poor result. Now Holyrood Day is the 14th September so we had better remember to make a note of the weather - you never know. The most frequent weather pattern in September is the three dry periods known as the "old wives summer" which in turn are followed by wet stormy days. The dry spells normally occur 7th to the 10th, 16th to 21st, and 30th as anticyclones move east across the UK. The most common time for gales and depressions is around the 24th. We shall see. Holyrood Day may be lucky then.

With the wet July everything is very green at present and doesn't look very autumnal yet in the Churchyard. But this month we must cut back all the wild growth and give it a good raking. This removes the old grass etc. and spreads the wild flower seeds. If we leave the grass to rot, it over feeds the soil which most of the wild

flowers don't like. I think we will make the cut near the end of the month. I always feel a bit sad when we get to this time of the year in the Churchyard: the lovely promise of spring, then all of a sudden we are into Autumn. Silly old thing. But something has cheered me up. What we have done to encourage wildlife in every aspect over the 29 years must have made a big difference. We started in 1994. I haven't done very well in getting the "batman" to



visit and discover what range of bats we have. The bat people have been very busy around the county I'm told and it is getting a bit late now into hibernation time. Next year perhaps?

Now a word of thanks to our super team of volunteers, well done this year for cutting the main grass areas so regularly and for being so reliable. Thanks. Unfortunately as I have mentioned last month we are already much too small in number to keep up the good work of "wildlifeing". If you think that this is something important to keep working with and you can find some time to help to give me a shout. We will be in the Churchyard on the work days printed below so just pop in to see me for a few moments to chat.

Our work days, probably the last without support, will be Saturdays 9th and 23rd, 9.30 am till 11.30 am, yes plus coffee and biccies.

Thanks again for your continued help I do appreciate this, hope to see you walking through. Very best wishes

Mike Porter 01926 624909

WESTON UNDER WETHERLEY VILLAGE HALL NEEDS NEW GROUPS/CLUBS

Special Offer

First 6 Sessions Free

Due to the retirement of one of our long term dance groups, we now have space on Friday nights for a regular group booking. It has taken over 20 years for this slot to become available - so don't miss out!

We can also offer Monday evenings, Tuesday and Thursday daytime. We are offering new groups 6 free sessions this autumn to help establish new classes in the village



REGULAR GROUP BOOKING PRICE: £12PH

Contact Kelly and mention this offer at

bookings@westonvillagehall.org.uk

www.westonvillagehall.org.uk

THE COMPUTER PAGE

Living Under Surveillance

The American artist and filmmaker Andy Warhol declared in the late 1960s, "In the future, everyone will be world-famous for 15 minutes". There is an argument to say that nowadays, instead of "15 minutes of fame", we are lucky if we get 15 minutes of anonymity! The 21st century has become the century of Surveillance and it seems we are constantly being spied upon, from government or big corporations.

Once most of the data about us was not recorded and what was, was in the form of paper - not very accessible to everyone without a great deal of red tape. Then came the cloud, where an unlimited amount of data could be saved and in multiple places. Data about us is now recorded directly digitally instead of being converted from paper and can be accessed by anyone through any device from any part of the world, provided they have the correct passwords – and it is still, incredibly, the case that the most popular password is “password”! Today tonnes of data related to all 7 billion odd global citizens is available out there. Nobody is anonymous. How does that information get out there?



The first thing to say is that people actually seem to like making their personal information public. The age of Social Media has shown that people willingly share their names, relationship details, photos,

locations, holidays, political beliefs... you name it. Even if you are not personally on social media, your friends and relatives could

be and can share your information and pictures widely.

Your mobile phone knows a lot about you, including where you are most of the time. But more important than "where you are" is the fact that the mobile knows what you are. It knows how much time you spend looking at the screen, what you like and dislike, how much you spend, all the apps that you have installed, how you use them and for how long. It has a rough idea of your personality and your social status. Your mobile is now actually your biggest surveillance device. And the increasing trend to rely on online shopping for all manner of purchases also means that your financial details are increasingly out there for others to see.

Facial recognition makes using your mobile easier but it can also be a source of surveillance. **The Chinese, for example, have taken facial recognition to the next level so much so that it has become a central tenet of government there. Now there is no escape for both criminals and citizens who have committed even minor offences.** Facial recognition is a very popular form of payment, because it is so easy. That is the thing about most of these technologies. Their ease of use makes life better, but they come with a catch - your privacy.

Even your car can spy on you. **Driverless cars are** imminent, but connected cars are already here and soon they will dominate the market. So that means that already someone knows where your car is, where it is headed to, whether it is speeding or not and whether it has broken other traffic rules or not.

Privacy seems an out-dated concept nowadays. Thankfully, while this is not a totally avoidable problem, there are some ways you can avoid some of the worst effects. I'll outline some of these in next month's column.

DUBLIN AND AN ICELANDIC ASH CLOUD

In 2010 Brian and I went to Dublin for 5 days holiday with our four pals whom we met on the QE2 in 1988; and saw just once a year! Then the Icelandic Ash Cloud happened, 5 days was now 10! This meant moving into an airport hotel; then we had to pack our cases every day and visit the airport for 5 days for any flights! The day had half gone after coffee, cake and the newspapers to deal with - so we went on endless bus journeys to nowhere just to keep busy, but what fun we had. One day we saw this van:



Other problems then occurred - we're all on medication so had to pay for prescriptions (claimed back), 5 extra days of kennel fees and car parking fees (couldn't claim back); also washing our smalls in the hotel bath; plus endless phone calls to cancel our various commitments. A gentleman we met in the lift said he only came for the day to collect a CD for his wife, so we put together to buy him a toothbrush - sorry no we all put together and kitted him out handsomely. Every night after dinner a queue formed at the Reception Desk for available ferries and associated problems, so I was asked to help as I knew the system!! Incidentally we were allowed to claim for our hotel meals, but not for wine or beer!

We saw a lot of beautiful Ireland and it was a fun-filled memorable holiday - we wouldn't change a thing!

Wendy Green

Welcome to The Red Lion Hunningham



At The Red Lion Hunningham, food is made strictly for the soul. Bright, beautiful and mouthwatering, our food is a true sensation for the eyes and the belly. This is the kind of food that is cooked simply and cleverly while showcasing the great British palette at its culinary best.

We are positioned within the peaceful village of Hunningham, 3 miles to the north-east of Leamington Spa, yet inside the Radford Semele Ward. The Red Lion Hunningham offers enviable views along the River Leam while overlooking the spectacular Warwickshire countryside. We are open 7 days a week for food and drink.

