

Voice

of the villages

Hunningham, Offchurch, Weston, Wappenbury, Eathorpe

Newsletter

MAY 2024

Hal-an-tow, jolly rumbalow

We were up long before the day-O

To welcome in the summer

To welcome in the May-O

The summer is a-coming in

And winter's gone away-O

If you've ever visited Helston in Cornwall on the day of their May Day celebrations, you will have heard this song being sung in the streets (before the famous Floral Dance at midday.) Read more about its history later in this newsletter.

Editor: David Wray (wraydj@gmail.com)

The VOICE website

www.villagevoice.org.uk



Practically Perfect Ceremonies

Let me help you create your own unique ceremony

Lesley Coles - Traditional Celebrant
Weddings, Vow Renewals, Namings & Funerals



Tel. 07967 203181

Email. lesley@practicallyperfectceremonies.co.uk

Web. www.practicallyperfectceremonies.co.uk

Eddie Croxall

Painter & Decorator

120 Kinross Road
Leamington Spa,
CV32 7ET

Tel: 01926 882 420

Mobile: 07778 283

244



HAL-AN-TOW

Hal-an-tow, jolly rumbalow
We were up long before the day-O
To welcome in the summer,
To welcome in the May-O
The summer is a-coming in
And winter's gone away-O

What happened to the Spaniards
That made so great a boast-O?
Why they shall eat the feathered goose
And we shall eat the roast-O

Robin Hood and Little John
Have both gone to the fair-O
And we will to the merry green wood
To hunt the buck and hare-O

And as for our good knight St. George
St. George he was a knight-O
Of all the knights in Christendom
St. George he is the right-O

In the world of folk music, there are some songs that have a timeless quality, and resonate with audiences throughout the ages. One such song is “Hal-An-Tow”, performed at the annual May Day celebrations in Helston, Cornwall. Recordings of the song have been made by various folk-rock bands such as the Oyster Band, the Watersons and Steeleye Span.

"Hal-an-Tow" is a traditional Cornish folk song that dates back centuries. The exact origins of the song are unclear, but it is believed to have originated in Cornwall. The lyrics of "Hal-an-Tow"

vary slightly depending on the version, but the song typically celebrates the arrival of spring and the renewal of life. It references characters from English folklore, such as Robin Hood and St George, as well as historical events and figures. The meaning of the term "Hal-an-Tow" itself is disputed, although it almost certainly comes from the Cornish language (a Celtic language related to Welsh). "Calan" in Welsh and "Kala" in Cornish mean the beginning of the month ("Calends" in English, from which we get "calendar"). "Toos" in Cornish means "bunch of flowers". So the Cornish "Kala Toos" may have been the origin. All Celtic languages change the beginnings of words (it's called 'mutation'), so if you want to put 'dy' (day) in front of 'kalan', it would become 'dy halan'.



Over the years, "Hal-an-Tow" has been sung and performed as part of May Day celebrations in Cornwall and has become a cherished part of the region's cultural heritage. You can watch the 2019 performance on YouTube at https://youtu.be/_ky87Ci14L4?si=glaKdp_xvP3FY7Y3

WESTON BABIES and TODDLERS WEEKLY GROUP

EVERY FRIDAY 9.45am -11.15am

VENUE: Weston Village Hall

Come and let the little ones have lots of fun and meet other Mums, Dads, Grandparents, and Carers.



Further information contact Hazel Taylor 01926 632428

THE PILGRIM PUPPETS

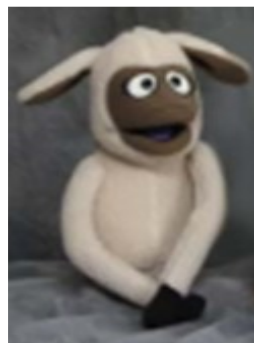
FUTURE EVENTS

Sunday 5th May COME 2 WORSHIP service at HUNNINGHAM Church 11.00am

Sunday 19th May PENTECOST at BILTON EVANGELICAL CHURCH 10.30am Rugby

For information about the Pilgrim Puppets, please have a look at [their web page](#).

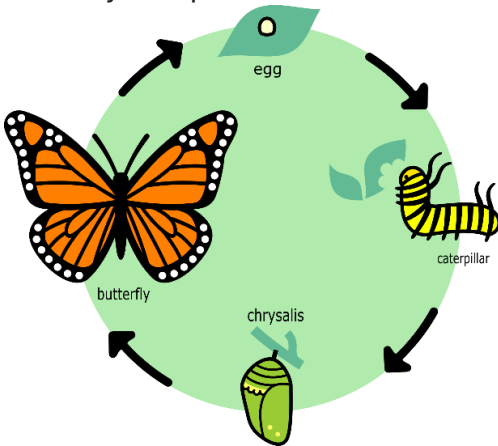
https://www.villagevoice.org.uk/?page_id=1069



Ring Hazel Taylor 01926 632428 if you are interested in our Puppets being part of your events.

MARIA SYBYLLA MERIAN

Many people will remember, from their school science lessons, diagrams like this showing the process by which butterflies develop, from egg to caterpillar to chrysalis to fully grown butterfly. The process is called metamorphosis.



What is not usually remembered is that an understanding of this process (seen in several insect species, and in frogs) did not really develop until the 18th century. Before that, people tended to think that creatures such as butterflies and frogs emerged fully formed – a process known as

‘spontaneous generation’. It was not until the work of Louis Pasteur in the 1860s that this theory was finally put to rest. Yet it had been severely questioned rather earlier than this, and, quite remarkably for the times, by a woman.

Maria Merian was a German naturalist who lived in the 17th and early 18th centuries. She was born on April 2, 1647, in Frankfurt, Germany and, from an early age, displayed an interest in insects and their life cycles. Her family had a strong artistic background, and she received training in painting and illustration. Her skills as an artist would later become an essential component of her scientific work.

As a young girl, Maria began collecting and studying insects, particularly butterflies and moths, and this early fascination led to her most significant achievements and her expedition to Suriname (then known as Dutch Guiana) in South America in

1699. This journey was remarkable because, during her time, it was quite uncommon for a woman to undertake such scientific expeditions. During the expedition, she observed and meticulously documented the life stages of various insect species, including butterflies and moths, which resulted in her influential publication "*Metamorphosis insectorum Surinamensium*" (Metamorphosis of the Insects of Suriname).

In her publication, Maria Merian accompanied her detailed observations with beautifully illustrated plates. Her artistic talent helped accurately depict the insects' life stages, attracting the attention of fellow naturalists and scientists.



In this plate, she depicted the metamorphosis of the garden tiger moth, its plant host, and parasitic wasps.

Merian's work challenged the prevailing belief at the time that insects spontaneously generated from other substances. She demonstrated that insects, particularly butterflies and moths, undergo complete metamorphosis—egg, larva, pupa, and adult stages. Her work laid the foundation for modern

entomology and contributed significantly to the understanding of insect life cycles and metamorphosis. Her detailed and accurate observations have had a lasting impact on the study of insects and natural history.

As a female scientist in the 17th century, Maria faced challenges

and gender barriers in the male-dominated scientific community. Despite these obstacles, her dedication and achievements earned her respect among her contemporaries. She passed away on January 13, 1717, in Amsterdam, Netherlands, leaving behind a lasting legacy in the scientific world.

Among her more significant contribution to science is the pairing of each larva type with the plant on which it fed. She collected and kept caterpillars and conducted experiments to confirm her observations. She noted "caterpillars which fed on one flowering plant only, would feed on that one alone, and soon died if I did not provide it for them." She documented that some caterpillars would feed on more than one plant, but some only did so if they were deprived of their preferred host plant.



Portrait of Maria Sibylla Merian from 1679

MONDAY CLUB

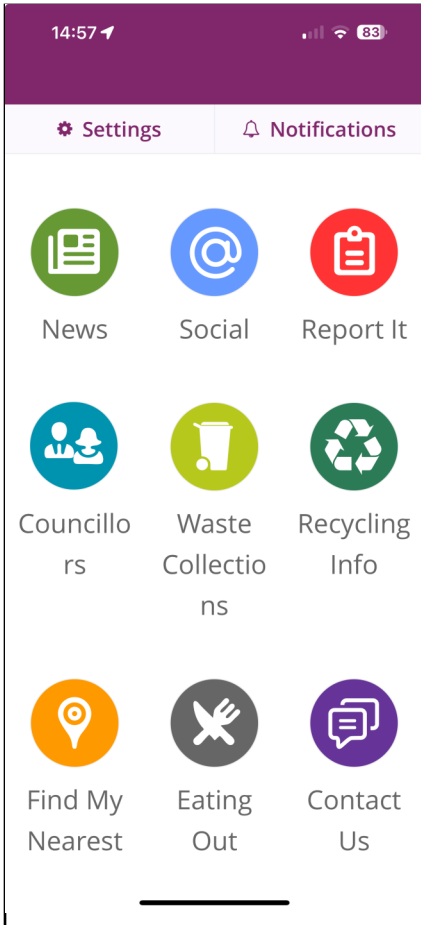
There was a very spirited discussion following a presentation on re-cycling by Steph from Warwick District Council and Caroline from Warwick County Council. Re-cycling had been the subject of a talk some years ago but, with the opening of the new Sherborne Re-cycling plant in Coventry, it was time for an update.

Blue bin refuse is now sorted, not by people on the line, but by robots with cameras and artificial intelligence (AI). Almost everything can be separated and then sold to companies for re-processing. The Sherborne plant can measure purity to meet the customer's specific quality needs. Anything which cannot be sold is sent to the Coventry incinerator next door along with grey bin contents. The incinerator produces heat which is used for the Coventry District Heating system covering the new swimming pool and the Herbert Art Gallery. Nothing from doorstep collections now goes to Landfill sites .

The contents of our green bins now goes to the in-vessel (anaerobic) processing plant at Stockton and is converted to compost. Also, the weekly food bin contents is heat treated and converted to reusable energy.

Both of our District and Local councils work very hard to achieve a high standard of recycling, which is born out by the District being at the top of the National recycling league and the Local council in the top ten. Great news for our planet and financially.

A big thank you, Steph and Caroline, for a very informative presentation and congratulations to them and their colleagues for establishing such a good service in Warwickshire.



A video showing the re-cycling plant in operation can be viewed by clicking on the link to Sherbourne Recycling. <https://sherbournerecycling.co.uk/>

What can and cannot be put in the blue lidded bins can be found by clicking on the link. https://www.warwickdc.gov.uk/info/20471/blue-lidded_recycling_bin

More information on waste collections and re-cycling can be found using the Warwick District App available from Apple and Google. See picture on left.

Trudy and Robert Birkmyre

HS2 DROP IN: CUBBINGTON VILLAGE HALL

There will be an HS2 drop in at **Cubbington** Village Hall on 9 May between 2 -6pm. Representatives of HS2 will be there to answer questions and provide an update on the project. They will be joined by a specialist from the noise team who will be able to talk about how they measure, manage and mitigate construction noise impacts. For further details, click the link: [HS2 and BBV drop in: Cubbington Village Hall](#)



THE OFFCHURCH GROUP

Vestry and Annual Parochial Church Meeting

Tuesday 14 May 2024

7.30pm – Offchurch Village Hall

Vestry Meeting

This meeting is open to:

- * all persons whose names are entered on the Electoral Roll of The Offchurch Group Parish
- * all persons resident in the Parish whose names are entered on a register of local government electors by reason of such residence

Agenda

1. Welcome and prayer
2. Apologies for absence
3. Minutes of the last Annual Vestry Meeting (2023)
4. To elect two Churchwardens to serve for a period of one year
5. Any other business

Annual Parochial Church Meeting

At this meeting, the Annual Report of The Offchurch Group will be presented along with a financial statement.

Everyone is welcome at the APCM. However, only those on the Electoral Roll of The Offchurch Group Parish are entitled to vote, should a vote be necessary.

We do hope you will be able to join us as we look back over the past year of The Offchurch Group. Nibbles and wine will welcome you from 7.00pm.

The Offchurch PCC

**ONE CHURCH FELLOWSHIP RECEIVING AND SHARING
GOD'S GIFTS IN CHRIST
ACROSS OUR FIVE VILLAGES**

CHURCH SERVICES MAY 2024

Sunday 5th	11.00am – COME2WORSHIP + Zoom	St Margaret's (Hunningham)
Thursday 9th	7.00pm - Ascension Day	St John's (Wappenbury)
Sunday 12th	10.00am – Holy Communion + Zoom	St Gregory's (Offchurch)
Sunday 12th	6.00pm - Evensong	St Michael's (Weston)
Saturday 18th	Messy Pentecost Fun! - 3.00pm-5.00pm	Weston Village Hall
Sunday 19th	10.00am – Sunday Worship + Zoom	St Gregory's (Offchurch)
Sunday 26th	10.00am – Holy Communion + Zoom	St Gregory's (Offchurch)

Church warden details are as follows:

Graham Douglass 07754 350614

grahamdouglass@Hotmail.com

Mandy Lewis 07864 359988 amanda.e.lewis@btinternet.com





Warwickshire
Wildlife Trust

Offchurch Garden Club



Warwickshire
Wildlife Trust

Monday 20th May 7.30pm
Offchurch Village Hall

'Gardening for wildlife and your plate'

A talk by Philippa Arnold of
Warwickshire Wildlife Trust

For more information phone

Claire Heather Jane
07568 500765 01926 422476 07747753799





Offchurch Garden Club



Saturday 11th May
Offchurch Village Hall
9.30 - 12.30

PLANT SALE

Everyone welcome - Bring a friend

Refreshments will be available to purchase.

All proceeds go to fund the running of the OFC
(Offchurch Garden Club)

For more information phone

Claire Heather
07568 500765 01926 422476



OFFCHURCH FLOWER CLUB

Meets at Offchurch Village Hall 7.30-9.30 on the second Wednesday of the Month.

We enjoyed a very interesting, informal talk by Holly Thurgood in April. See below for some of the beautiful tulips which Holly showed us. We are greatly looking forward to two “double bill” meetings and a “dem-and-make”.

Meeting Dates are:

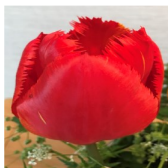
May 8th Afternoon 2-4pm. Meeting at Radford Hall Farm for a ‘walk and talk’ guided by Henry Marriott, to look at the trees he has planted over the last 40 years and the flora and fauna which thrive there. ‘Cuppa and Cake’ included. Members Free. Visitors welcome £5. Limited numbers. Book and pay through Maggie H, email below.

Evening Meeting: Arranging without Oasis. Plenty of chicken wire available, also lots of other ideas.... ‘frogs’ marbles, glass beads etc. Bring vase, flowers and foliage to suit your budget.

June 12th : Demonstration and make a Floral Head-dress.

July 10th : Tour of Bubbenhall Lavendar Farm: Meeting there at 1100hrs. Visitors welcome. Farm’s charge £8. Members free. Bring picnics. An Evening Meeting will follow at 7.30pm

Your first meeting is free, unless stated above.
Any further enquiries to mandhhartog@googlemail.com





Vehicle Crime - prevention tips & tricks

Help us to reduce vehicle crime by engaging in these simple tips & tricks:

- ◆ Always lock it - even if you are only turning your back for a moment or two.
- ◆ Close windows and sun roofs to prevent 'fishing'.
- ◆ Screw your number plates with tamper-resistant screws.
- ◆ Secure anything that is on the outside of your vehicle - such as roof-racks and top boxes.
- ◆ Ensure that no valuables are left in the vehicle - for example, tools, vans are often targeted by thieves for tools stored inside. For any valuables left unattended in vehicles, it may be a good idea to utilise one of the methods of property marking to make them identifiable.
- ◆ Park in well-lit and busier areas.
- ◆ When buying a vehicle, always check the DVLA V5 document and make sure the Vehicle Identification Number (VIN) on the vehicle is the same as on the document.
- ◆ Be aware of carjackers - always drive with the doors locked and leave enough space between your vehicle and the vehicle in front of you to enable you to get out of a tight spot.

In an emergency, always call 999, to report something else, contact 101 or report an incident online.



We genuinely love helping people and we love technology!

So we combine the two into an honest, independent, personal IT service that can help you get technology to work for you rather than against you.

Call Gary on 07814 236595 or visit our website
www.coolbreezetechnologyservices.co.uk



Messy 2024 dates for your diary

We have planned a number of dates for Messy Church gatherings in 2024. Pop the dates in your diary or on your calendar and look out for more information.

18 May : Pentecost

20/21/22 August: Messy Summer sessions

12 October: Messy Harvest

14 December: Messy Christingle

We do hope you can join us for all or some of these.

The Messy Team

Messy Church is for families of all shapes and sizes.

For more information contact Jane on 07850 4442316 or email off-churchmessy@gmail.com

EATHORPE COFFEE AND CAKE MORNING

Sunday May 5th
Coffee and Cake Morning

10am - 12noon
Eathorpe Village Hall

ALL WELCOME



THE POETRY PAGE

Although I adore the poetry of T.S.Eliot, I admit that I can never share his view of Spring.

*April is the cruellest month, breeding
Lilacs out of the dead land, mixing
Memory and desire, stirring
Dull roots with spring rain.*

That rebirth of life was a depressing thing for Eliot, but for me the mere thought of Spring produces optimism and joy (although I have to admit that 2004 has not as yet been the most optimistic of Springs! It's hardly stopped raining since Christmas!)

But Spring has encouraged me to explore some poetry, some old friends and some new acquaintances. I'm sure you will all have your own favourites but - here are some of mine.

Let's start with Housman. *A Shropshire Lad* is, well, melancholy rather than joyous, but you can forgive that in a poet who can write as well as this:

*When green buds hang in the elm like dust
And sprinkle the lime like rain,
Forth I wander, forth I must,
And drink of life again.
Forth I must by hedgerow bowers
To look at the leaves uncurled,
And stand in the fields where cuckoo-flowers
Are lying about the world.*

Drinking of life again is exactly what Spring inspires you to do.

From the melancholy of Housman, to the uplifting vision of ordinary things which Billy Collins presents us.

Today

*If ever there were a spring day so perfect,
so uplifted by a warm intermittent breeze*

*that it made you want to throw
open all the windows in the house*

*and unlatch the door to the canary's cage,
indeed, rip the little door from its jamb,*

*a day when the cool brick paths
and the garden bursting with peonies*

*seemed so etched in sunlight
that you felt like taking*

*a hammer to the glass paperweight
on the living room end table,*

*releasing the inhabitants
from their snow-covered cottage*

*so they could walk out,
holding hands and squinting*

*into this larger dome of blue and white,
well, today is just that kind of day.*

Not, perhaps, accurate in terms of our current Spring but we have all experienced “just that kind of day” and are so much richer for it.

e.e.cummings is a poet I didn't appreciate at all when young - I used to think his work was a little silly. But that's not the case now. He's playful but deceptively thoughtful. I read him all the time!

[in Just-]

*in Just-
spring when the world is mud-
luscious the little
lame balloonman*

whistles far and wee

*and eddieandbill come
running from marbles and
piracies and it's
spring*

when the world is puddle-wonderful

*the queer
old balloonman whistles
far and wee
and bettyandisbel come dancing*

from hop-scotch and jump-rope and

*it's
spring
and*

the

goat-footed

*balloonMan whistles
far
and
wee*

I just love the thought of a 'puddle-wonderful' world!

Talking about poets who make you see the wonders in the ordinary will always, I suspect, bring me round to the incomparable Emily Dickinson. She certainly led a plain, almost drab life, yet her artistry - her command of words - helped her utterly transcend this. As she said, she would always “dwell in possibility”.

*I dwell in Possibility –
A fairer House than Prose –
More numerous of Windows –
Superior – for Doors –*

*Of Chambers as the Cedars –
Impregnable of eye –
And for an everlasting Roof
The Gambrels of the Sky –*

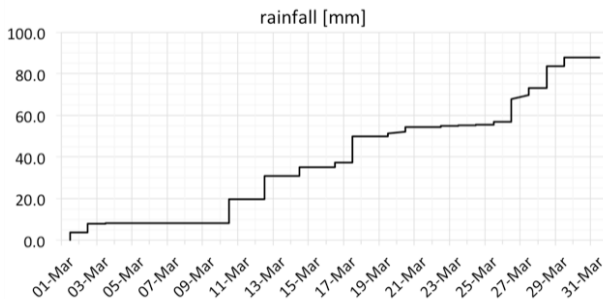
*Of Visitors – the fairest –
For Occupation – This –
The spreading wide my narrow Hands
To gather Paradise –*



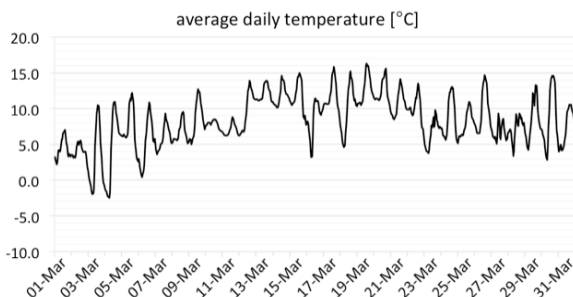
WEATHER WATCH: MARCH 2024

March, so the old saying goes, ‘roars in like a lion and out like a lamb’. Well this March both animals would be extremely damp as 88 mm of rain fell in the month, double the average for the area.

However, despite so much rain it was still 4 mm less than the total for March 2023. Despite all the rain there were 13 days when no rainfall was measured.



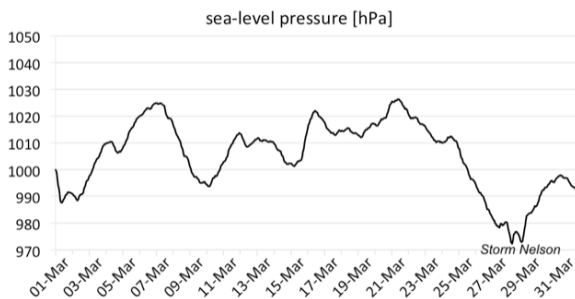
It was another mild month; the average temperature was 8.6°C, which is 1.3°C above the average for the area. The highest



daytime temperature was 16.7°C on the 19th. Most nights were also mild with just two air frosts and 10 grass frosts. The coldest night was the 4th when the temperature fell to

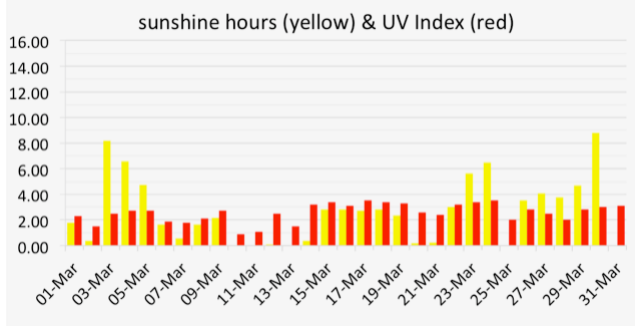
minus 2.7°C.

‘Nelson’ was this month’s named storm. Actually named by the Spanish Met Office it was not too severe across the UK, only affecting the



south and west with snow falling across parts of Devon and high winds in the Channel on the 28th. The sea-level atmospheric pressure rose to 1025 hPa on the 21st, falling to 975 hPa towards the end of the month. The average pressure was 1005 hPa. Winds were mainly from the southwest with a maximum gust of 31 mph on the 28th.

There were five days with no sunshine at all but a total for the month of 82 hours, which is 26 percent below the average for March in our area. However, whilst low this was still 20 hours more than in the previous March.



Water, water everywhere but not a drop to drink

Having rather glibly suggested there would be no ‘hosepipe bans’ this year due to the very wet weather refilling aquifers and reservoirs, I appear to be wrong. Evidently, as well as failing to keep our rivers and seashores clean, support sewers and sewage works, repair leaking pipes, etc., the regional water companies are ignoring the provision of new sources of drinking water. According to the press [1] no new reservoirs have been completed since 1992, with just three new reservoirs planned or under construction when an estimated 30 will be necessary to cope with future needs and safeguard our water supply. Unfortunately, we are getting ‘all or nothing’ rainfall rather than a steady precipitation leading to periods of flood and drought. Another problem is that the rain doesn’t necessarily fall over populated areas where it is required

meaning water needs to be moved from where it falls, mainly in the north-west, to where it's needed in the south-east. Ofwat, the government regulator [2], states that sustainable and resilient ways to secure water supplies across the country are vital given the challenges of climate change and increasing population. Apparently, they have launched a multi-billion pound project to “encourage water companies to bring more investment in major infrastructure schemes, including new reservoirs.” Home investment in new hosepipes may be premature...

[1] The Times Newspaper, accessed 2 April 2024

[2] <https://www.ofwat.gov.uk/>

For local weather details and forecasts go to: <https://offweather.hopto.org>

Richard Seaton rkseaton@outlook.com

COMMUNITY CAFE

The Community Café ‘Drop In’ is now seasonal.

Everyone welcome for refreshments & a chat at the café.

During the Spring and Summer ...

Every second Wednesday of May, June, July and August

Do come and join us for AFTERNOON TEA, home-made cakes, sandwiches, conversation and company..

In Hunningham Parish Room

NEXT AFTERNOON TEA – 8th May 2024 3.30 pm

We hope to see you there. If you need a lift please contact Hazel Taylor 01926 632428



Working Together as a Community
 Joint Parish Council Meetings

Our next meeting is scheduled for 21st May, 2024 at 7:30pm and is being held at Offchurch Village Hall. Members of the public are welcome to attend meetings. Residents can email or phone Parish Councillors if they have issues to raise.

For further information or an emailed copy of the meeting Agenda or minutes please contact the Clerk on Clerk.jpcehow@outlook.com

The meeting dates for 2024

The dates below follow the usual JPC pattern of meetings.

May	21st	Offchurch Village Hall
June	No Meeting	
July	16th	Eathorpe Village Hall
August	No Meeting	
September	17th	Offchurch Village Hall
October	No Meeting	
November	19th	Eathorpe Village Hall
December	No Meeting	

SECONDARY SCHOOL RULES?

At secondary school I had a habit of humming in Science Class, and the teacher would stop her experiments with test tubes etc and just stare at me over her dark menacing spectacles - I would stop humming but would unconsciously start again. After a few more hums and a few more black stares I was sent out of the classroom, laying down my test tube and the contents of my test tube, which was a strange orangy-red colour, flooded the desk with weird pops and fizzles. This sent the whole class into fits of laughter, and out I went. Apparently a few more stares and the class returned to silence!

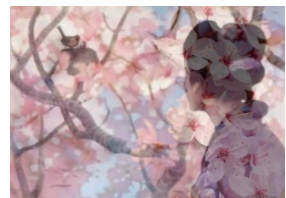
On another occasion In the Music Class we were asked to sight-read a couple of bars of music, so I did - accurately - again and again (because that's what I do, even at the age of 13) The teacher then asked me to stop singing as I was putting everyone off - I thought I was actually helping!! Just like the humming I unconsciously started singing again and guess what I was sent out of the classroom again!

I was in the English Country Dancing A-Team, and we were chosen as the finale at the end-of-term Concert. Unfortunately on the night our pianist was taken ill. Panic ensued, and I offered to play. Lots of doubting looks came my way, as the Music was missing as well. We had a quick practice, they then believed I could actually play without music. We had a standing ovation - it was a roaring success!

This is why I've played and sang fearlessly all my life.

Wendy Green

Never underestimate the value of humming! One of Puccini's most beloved tunes consists entirely of humming!





Latest scam and rogue trader alerts from Warwickshire Trading Standards

New Phishing Email

Beware of a new scam phishing email that falsely purports to come from BT. The email states that ‘Your bill is available online’ and asks recipients to log in via a link in the email. These bogus email links usually take customers to fake websites from where passwords and user names can be stolen. Never log into your bank, utility company or a business you shop with, via an email. Always log in via their official browser URL or app.

Bogus Bank Loan

A consumer reported applying for a loan from a loan company online and being approved. He was then asked to send money to the loan company, to receive his loan. This the company claimed was for a ‘deposit’. He was then asked for more money because he had a ‘low credit rating’ and finally a further payment for a ‘lawyers’ fee. When the consumer asked to cancel the loan agreement, he was asked to send a further payment as a ‘cancellation fee’. The consumer lost over £1000 and no loan was ever forthcoming.

This is a classic loan fee scam. People searching for loans online will receive a phone call from someone claiming to be able to offer the loan. They may even pretend to be calling from one of the companies the consumer applied to. They then claim that before they can release any money, the customer has to make certain payments. In reality, there is no loan. No money is ever paid out

and the customer is simply left out of pocket. Never pay in advance to receive a loan.

Bogus Warwickshire County Council Energy Efficiency Phone Calls

A resident reported receiving an unexpected phone call from someone claiming to be working on behalf of Warwickshire County Council wishing to arrange an appointment to check the resident's home for energy efficiency. Residents are warned that this is a popular tactic used by rogue traders wanting access to peoples' homes in order to undertake overpriced and unnecessary work. Trading Standards advises all residents not to buy goods or services from unsolicited 'cold' callers.

Stocks and Shares Investment Trading Scam Left Victim Believing he had made Millions of Pounds

A stocks and shares investment scam left one victim believing he had made over £50M. The victim reported that he had met someone online who had directed him to a website where he could sign up and trade investments. The victim believed that the website was genuine and that he was making money when the site was actually controlled by fraudsters and the millions of pounds in the victim's trading account didn't really exist. The victim tried to withdraw some of the 'money' he had made but was told that he would have to make a smaller payment up front first.

This is another example of a classic advanced fee fraud, where victims are asked to make smaller payments of money with the false promise that they will receive larger amounts in return.

How to Check that a Solicitor is Genuine

Several Warwickshire residents have recently reported receiving threatening letters from solicitors about debts they did not believe they owned. If you receive a letter, it is important that you check that it is genuine. Scammers often use the names of real solicitors to defraud their victims, or they create entirely bogus firms. To

help avoid being scammed, residents should take the following action:

- ◆ Check the name of the firm with the Solicitors Regulation Authority. The SRA is the regulator of solicitors and law firms in England and Wales.
- ◆ If the name of the business that has contacted you is not on the register, then tread carefully, it could be a scam! The SRA regulate all solicitors and most law firms in England and Wales.
- ◆ If the name of the firm is on the SRA register, contact the business using the contact details on the businesses' SRA record to find out if the letter is genuine or not. Don't use the telephone number or email address printed on the letter. Fraudsters will create genuine looking solicitor letters but put their own contact details onto them.

Have You Been Offered Digital Marketing Work? Then Tread with Caution!

If you've been offered work carrying out any digital marketing tasks, such as designing web graphics, editing web copy, tagging videos with keywords, reviewing websites, examining web analytics, updating email newsletter lists or updating social media etc. then be wary.

Scammers are recruiting people to carry out these daily tasks and people may think they are being paid for their work as they see the money in their online salary fund increase. At the beginning, they may even be able to withdraw some of this money. However, as time passes and the fund grows, victims of the scam begin to find that they are increasingly have problems withdrawing their cash.

Warwickshire victims have reported being told by the 'businesses' they have been working for that to withdraw their funds, they need to send money first. These funds are usually quite considerable, many tens of thousands of pounds, and this is done on purpose,

OFFCHURCH VILLAGE HALL BOOKINGS SECRETARY

The Offchurch Village Hall Committee is looking for a new Bookings Secretary. Could that be you?



We need someone who would enjoy meeting with people who wish to book the hall, would show them round if needed and then send out a hiring agreement, record the booking on a Google Calendar with the heating if required and send an invoice. The hall takes regular bookings as well as one off bookings for parties and similar. Anything done to promote the hall would be a bonus. Mobile phone provided.

There is a small negotiable fee available. It is difficult to predict the number of hours that would be required and these vary considerably but the fee would be reviewed as time goes on.

If this role tempts you please email Jane Inman jane_inman@sky.com for call 07850 444316 for more details.

Rheams (Plumbing & Heating) Limited

Est. 1967

Gas Safe Registered Engineers

Full central heating and boiler installations

Powerflush service

Landlords checks

**Servicing of heating appliances - natural gas,
LPG and Commercial**

Bathroom installations and general plumbing

**24 hour emergency call out, 365 days a year
(additional charges apply)**

Free quotations for large scale works

No job too small !

www.rheams.co.uk enquiries@rheams.co.uk

4 Manor Farm House, Lime Avenue, Lillington

Tel. 01926 428752

Welcome to The Red Lion Hunningham



At The Red Lion Hunningham, food is made strictly for the soul. Bright, beautiful and mouthwatering, our food is a true sensation for the eyes and the belly. This is the kind of food that is cooked simply and cleverly while showcasing the great British palette at its culinary best.

We are positioned within the peaceful village of Hunningham, 3 miles to the north-east of Leamington Spa, yet inside the Radford Semele Ward. The Red Lion Hunningham offers enviable views along the River Leam while overlooking the spectacular Warwickshire countryside. We are open 7 days a week for food and drink.

